

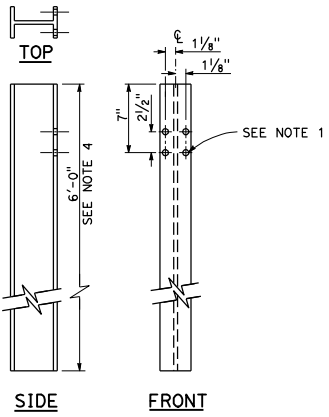
DIST	COUNTY	ROUTE	POST MILES TOTAL PROJECT	SHEET NO.	TOTAL SHEETS
<b>Randell D. Hiatt</b> REGISTERED CIVIL ENGINEER					
July 19, 2013 PLANS APPROVAL DATE					
No. C50200 Exp. 6-30-15 CIVIL STATE OF CALIFORNIA					
<small>THE STATE OF CALIFORNIA OR ITS OFFICERS OR AGENTS SHALL NOT BE RESPONSIBLE FOR THE ACCURACY OR COMPLETENESS OF SCANNED COPIES OF THIS PLAN SHEET.</small>					

TO ACCOMPANY PLANS DATED \_\_\_\_\_

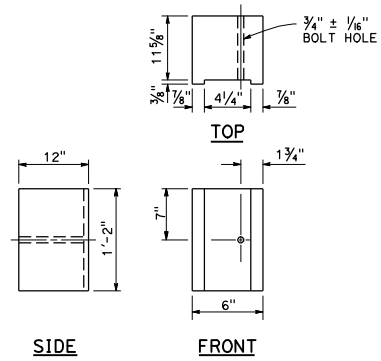
**NOTES:**

- All holes in steel post shall be  $\frac{9}{16}$ " Dia maximum.
- Dimensions shown for wood block are nominal.
- Notched face of block faces steel post.
- 6'-0" length posts to be used for typical roadway installation. 7'-0" length posts to be used for narrow roadway installation. See Revised Standard Plan RSP A77N3.
- See Revised Standard Plan RSP A77L3 for use of 6" x 8" and 8" x 8" notched wood blocks.
- This post and 8" x 12" block combination to be used for line post sections of MGS on narrow roadways and where strengthened line post sections of MGS are warranted to shield fixed objects.

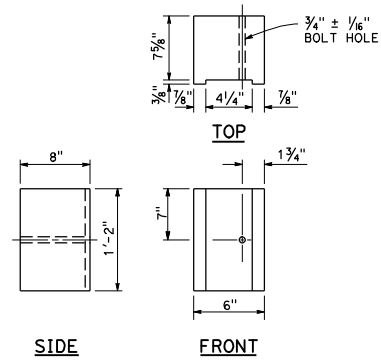
2010 REVISED STANDARD PLAN RSP A77N2



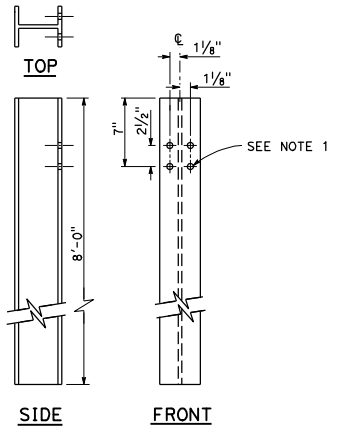
**W6 x 9 OR W6 x 8.5  
STEEL POST**  
See Note 4



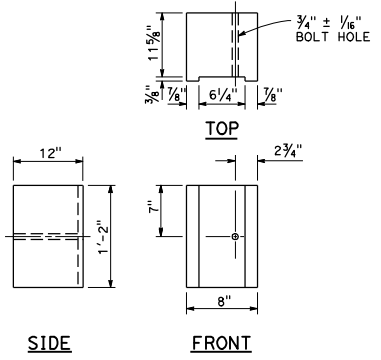
**6" x 12"  
NOTCHED WOOD BLOCK**  
See Notes 2 and 3



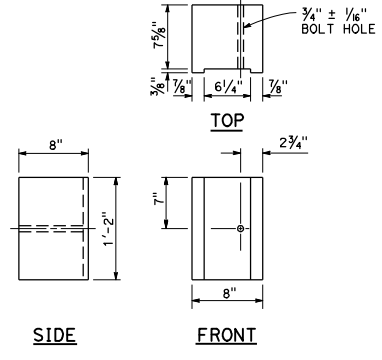
**6" x 8"  
NOTCHED WOOD BLOCK**  
Only for use with metal beam guard railing. See Note 5



**W6 x 15  
STEEL POST**  
See Note 6



**8" x 12"  
NOTCHED WOOD BLOCK**  
See Notes 2 and 3



**8" x 8"  
NOTCHED WOOD BLOCK**  
Only for use with metal beam guard railing. See Note 5

STATE OF CALIFORNIA  
DEPARTMENT OF TRANSPORTATION  
**MIDWEST GUARDRAIL SYSTEM  
STEEL POST AND  
NOTCHED WOOD BLOCK DETAILS**

NO SCALE

RSP A77N2 DATED JULY 19, 2013 SUPPLEMENTS THE STANDARD PLANS BOOK DATED 2010.

**REVISED STANDARD PLAN RSP A77N2**