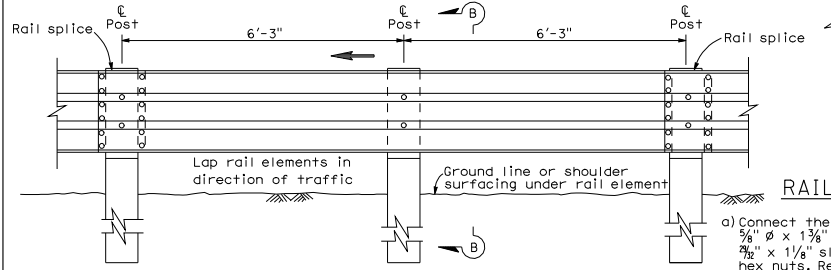
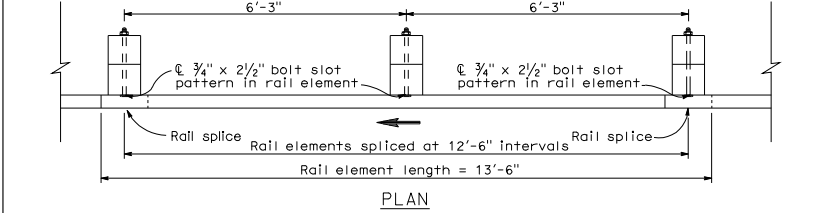
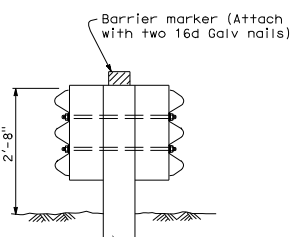
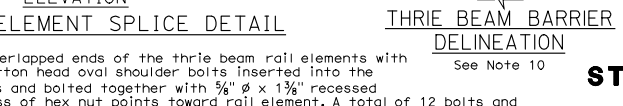
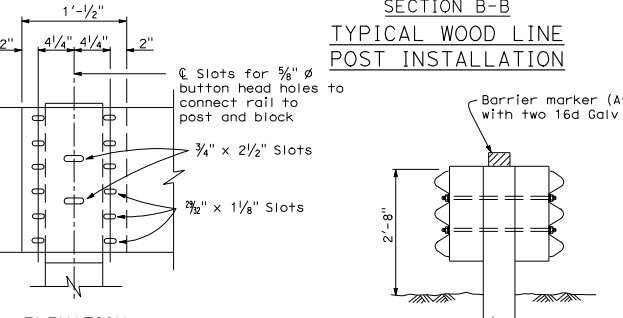
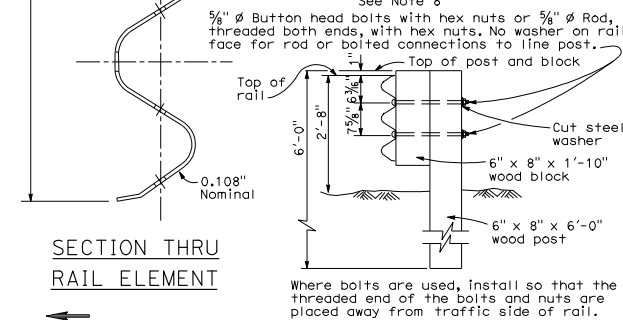
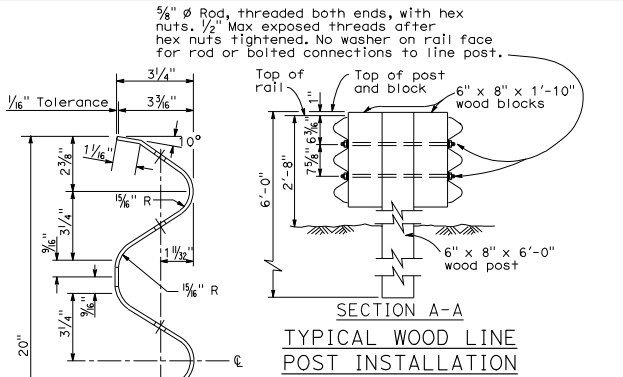


DOUBLE THRIE BEAM BARRIER
(Wood post and blocks)
See Note 1



SINGLE THRIE BEAM BARRIER
(Wood post and blocks)
See Note 1



DIST	COUNTY	ROUTE	POST MILES TOTAL PROJECT	SHEET NO.	TOTAL SHEETS

Randell D. Hiatt
REGISTERED CIVIL ENGINEER

May 1, 2006
PLANS APPROVAL DATE

Exp. 6-30-07
CIVIL

The State of California or its officers or agents shall not be responsible for the accuracy or completeness of electronic copies of this plan sheet.

To get to the Caltrans web site, go to <http://www.dot.ca.gov>

- NOTES:**
- For details of steel post thrie beam barrier, see Standard Plan A78B.
 - For details of standard hardware, posts and blocks used to construct thrie beam barrier, see Standard Plans A78C1 and A78C2.
 - Thrie beam barrier post spacing to be 6'-3" center to center, except as otherwise noted.
 - Top of barrier rail to be 2'-8" above ground line or shoulder surfacing under the rail element.
 - For barrier end treatments and barrier connections, see Standard Plans A78E1, A78E2, A78E3, A77F1, A77F2, A78G and A78H.
 - For connection to Concrete Barrier (Type 60), see Standard Plans A78I.
 - For details of thrie beam barrier on bridge see Standard Plan A78D2. For details of thrie beam barrier at fixed object, see Standard Plan A78D1.
 - Where offset roadway grades are encountered and height of rail element for each roadway cannot be obtained as shown in Section A-A, use saw tooth installation as shown on Standard Plan A78B.
 - Direction of traffic indicated by \rightarrow .
 - Median barrier delineation to be used when required by the Special Provisions. Spacing of barrier markers on adjacent median edgeline pavement delineation.

STATE OF CALIFORNIA
DEPARTMENT OF TRANSPORTATION

**THRIE BEAM BARRIER
STANDARD BARRIER RAILING
SECTION (WOOD POST
WITH WOOD BLOCK)**

NO SCALE

A78A