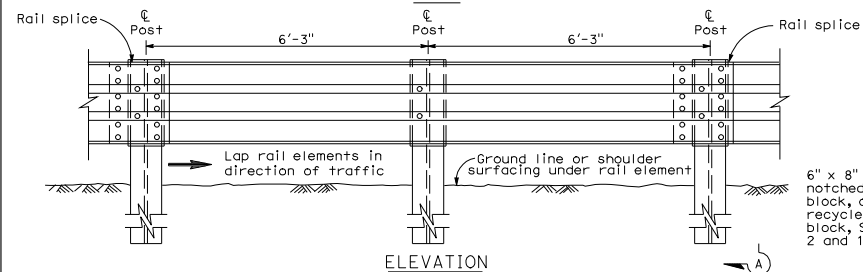
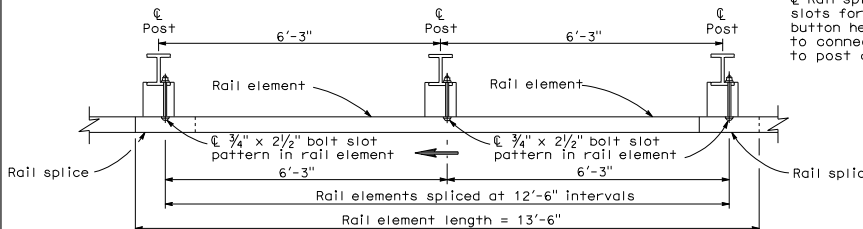


PLAN

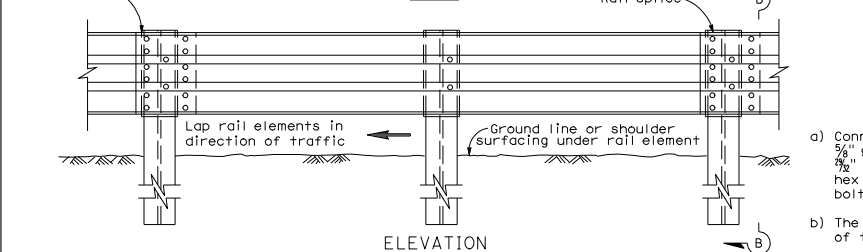


ELEVATION

DOUBLE THRIE BEAM BARRIER
(Steel post with notched wood or notched plastic blocks)
See Note 1

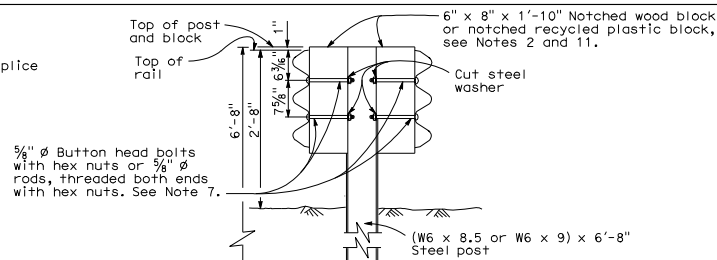


PLAN

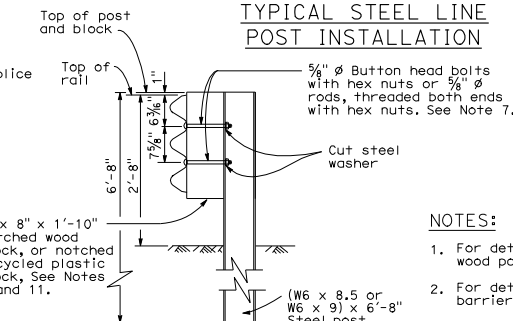


ELEVATION

SINGLE THRIE BEAM BARRIER
(Steel post with notched wood or notched plastic blocks)
See Note 1

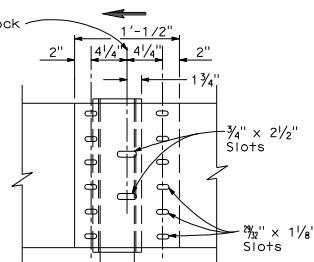


SECTION A-A
TYPICAL STEEL LINE
POST INSTALLATION



SECTION B-B
TYPICAL STEEL LINE
POST INSTALLATION

℄ Rail splice and slots for 5/8" ⌀ button head bolt to connect rail to post and block



ELEVATION
RAIL ELEMENT SPLICE DETAIL

- Connect the overlapped ends of the thrie beam rail elements with 5/8" ⌀ x 1 1/8" button head oval shoulder bolts inserted into the 7/8" x 1 1/8" slots and bolted together with 5/8" ⌀ x 1 1/8" recessed hex nuts. Recess of hex nut points toward rail element. A total of 12 bolts and nuts are to be used at each rail splice connection.
- The ends of the rail elements are to be overlapped in the direction of traffic (see details).
- Where end cap is to be attached to the end of a rail element, a total of 4 of the above described splice bolts and nuts are to be used. Where a return cap is to be attached to the ends of rail elements, a total of 8 of the above described splice bolts and nuts are to be used.

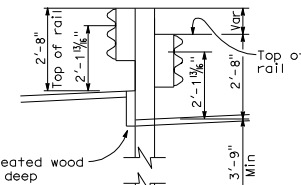
DIST	COUNTY	ROUTE	POST MILES TOTAL PROJECT	SHEET NO.	TOTAL SHEETS

Randell D. Hiatt
REGISTERED CIVIL ENGINEER

May 1, 2006
PLANS APPROVAL DATE

No. C50200
Exp. 6-30-07
CIVIL
STATE OF CALIFORNIA

To get to the Caltrans web site, go to <http://www.dot.ca.gov>



DOUBLE THRIE BEAM BARRIER
SAW TOOTH INSTALLATION
(Steel post and wood or plastic blocks only)
See Note 9

NOTES:

- For details of the cross section of the thrie beam rail element and details for wood post with wood block installations, see Standard Plan A78A.
- For details of standard hardware, posts and blocks used to construct thrie beam barrier, see Standard Plan A78C1 and A78C2.
- Thrie beam barrier post spacing to be 6'-3" center to center, except as otherwise noted.
- Top of barrier rail to be 2'-8" above ground line or shoulder surfacing under the rail element.
- For barrier end treatments and barrier connections, see Standard Plans A78E1, A78E2, A78E3, A77F1, A77F2, A78G and A78H.
- For connection to Concrete Barrier, see Standard Plans A78I.
- Attach rail element to block and steel post with 2 bolts or rods on approaching traffic side of block and post web. No washer on rail face for rod or bolted connections to line post.
- For details of thrie beam barrier on bridges, see Standard Plan A78D2. For details of thrie beam barrier at fixed objects, see Standard Plan A78D1.
- Saw tooth installation to be used where offset roadway grades are encountered and height of rail element for each roadway cannot be obtained as shown in Section A-A.
- Direction of traffic indicated by →.
- Notched face of block faces steel post.

STATE OF CALIFORNIA
DEPARTMENT OF TRANSPORTATION

THRIE BEAM BARRIER
STANDARD BARRIER RAILING
SECTION (STEEL POST
WITH NOTCHED WOOD BLOCK
OR NOTCHED RECYCLED
PLASTIC BLOCK)

NO SCALE

A78B