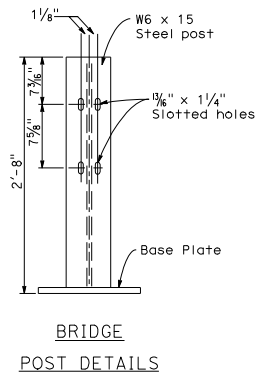
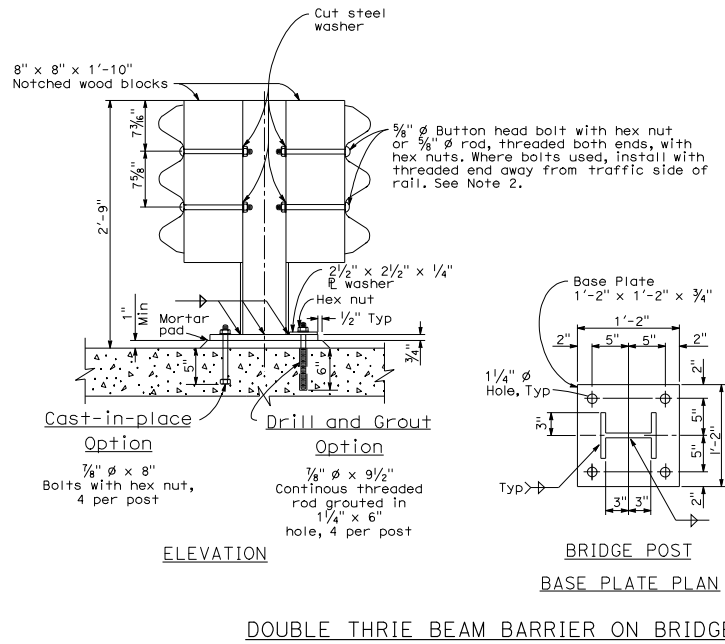
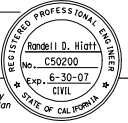


DIST	COUNTY	ROUTE	POST MILES TOTAL PROJECT	SHEET NO.	TOTAL SHEETS
<i>Randell D. Hiatt</i> REGISTERED CIVIL ENGINEER					
May 1, 2006 PLANS APPROVAL DATE					
The State of California or its officers or agents shall not be responsible for the accuracy or completeness of electronic copies of this plan sheet.					
To get to the Caltrans web site, go to http://www.dot.ca.gov					



NOTES:

1. See Standard Plan A78B for steel post with notched wood block construction details.
2. Attach rail element to wood block and steel post with 2 bolts or rods on approaching traffic side of block and post web. No washer on rail faces for rods or bolted connections to post.

STATE OF CALIFORNIA
 DEPARTMENT OF TRANSPORTATION
**DOUBLE THRIE BEAM BARRIER
 ON BRIDGE**
 NO SCALE

A78D2