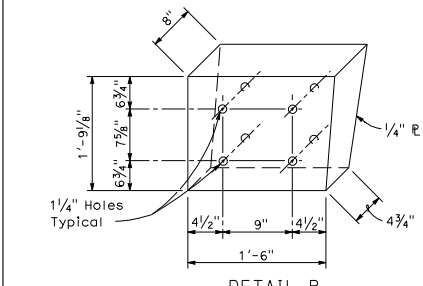
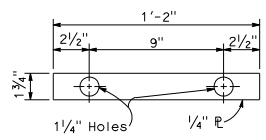


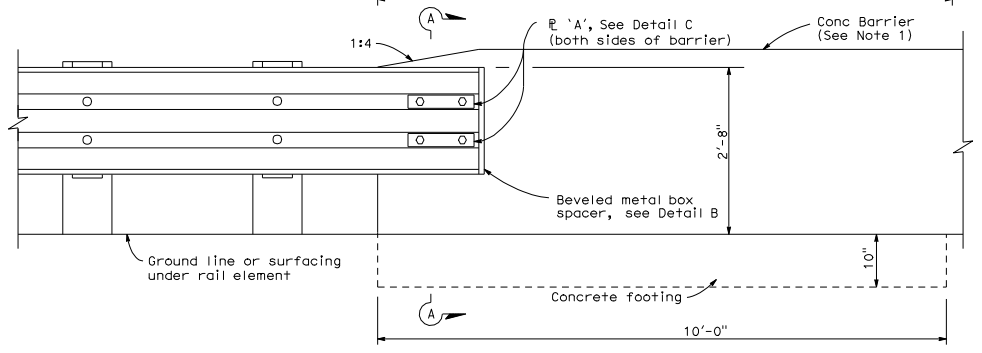
PLAN



DETAIL B  
Beveled metal box spacer  
See Note 3



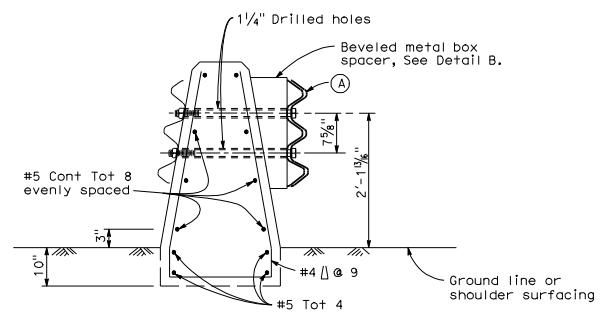
DETAIL C  
PLATE 'A'



ELEVATION

LEGEND

- (A) Nested thrie beam elements (one 12 gage element nested over one 10 gage element).
  - (B) One 10 gage thrie beam element.
  - (C) One 12 gage thrie beam element.
- 10 gage = 0.135" thick  
12 gage = 0.108" thick



SECTION A-A  
(Type 60 Conc Barrier shown)

NOTES:

1. For details of Concrete Barrier Type 60, see Standard Plan A76A. Thrie beam barrier connections to Concrete Barrier Type 60S and Type 60G are similar to details shown on this plan.
2. For additional thrie beam barrier details, see Standard Plans A78A, A78B, A78C1, and A78C2.
3. Where beveled metal box spacer is installed, place 1/4"  $\phi$  x 7/2" and 1/4"  $\phi$  x 3 3/4" pipe spacers on 1" HS bolts passing through interior of box.
4. Direction of traffic indicated by  $\rightarrow$ .

STATE OF CALIFORNIA  
DEPARTMENT OF TRANSPORTATION  
**DOUBLE THRIE BEAM BARRIER  
CONNECTION TO CONCRETE  
BARRIER**

NO SCALE

A781

DIST	COUNTY	ROUTE	POST MILES TOTAL PROJECT	SHEET NO.	TOTAL SHEETS

*Randell D. Hiatt*  
REGISTERED CIVIL ENGINEER

May 1, 2006  
PLANS APPROVAL DATE

*Randell D. Hiatt*  
No. C50200  
Exp. 6-30-07  
REGISTERED PROFESSIONAL ENGINEER  
CIVIL  
STATE OF CALIFORNIA

The State of California or its officers or agents shall not be responsible for the accuracy or completeness of electronic copies of this plan sheet.

To get to the Caltrans web site, go to <http://www.dot.ca.gov>