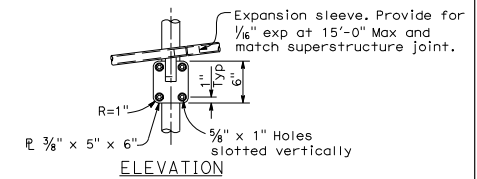
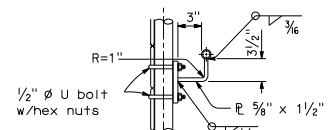
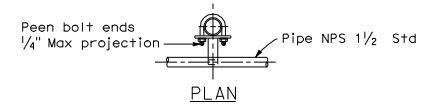
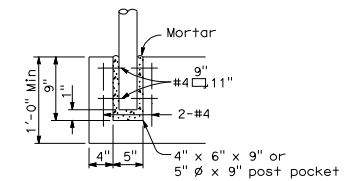
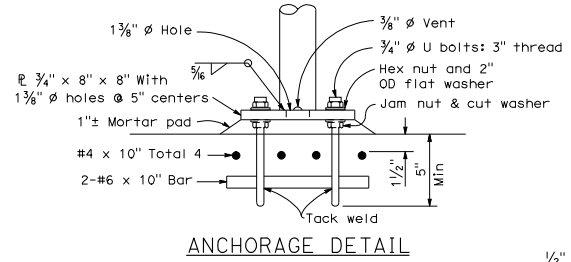
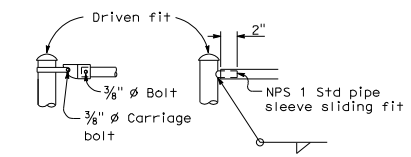
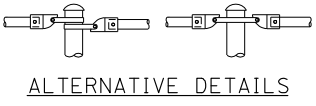
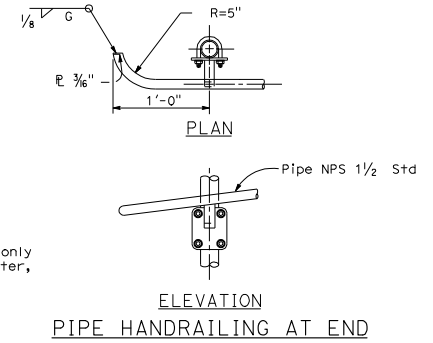


DIST	COUNTY	ROUTE	POST MILES TOTAL PROJECT	SHEET NO.	TOTAL SHEETS

REGISTERED CIVIL ENGINEER
 May 1, 2006
 PLANS APPROVAL DATE
 The State of California or its officers or agents shall not be responsible for the accuracy or completeness of electronic copies of this plan sheet.
 To get to the Caltrans web site, go to <http://www.dot.ca.gov>

REGISTERED PROFESSIONAL ENGINEER
 Tiliot Satter
 No. C42892
 Exp. 03-31-08
 CIVIL
 STATE OF CALIFORNIA



- NOTES:
- Railing assembly except chain link fabric to be galvanized after fabrication.
 - Peen all bolt threads.
 - Railing shall conform to horizontal and vertical alignment. Posts shall be vertical. Top and bottom pipes shall be bent if radius is 148'-0" or less; may be on 8'-0" chords if radius is over 148'-0".
 - When railing is on slope, 6'-0" chain link fabric shall be placed parallel to slope.
 - Alternative details may be submitted by Contractor for Engineer's approval.
 - Additional pipe NPS 1/4 Std required when radius is less than 150'-0".

ALTERNATIVE ANCHORAGE DETAIL
 May be used when thickness of concrete is 1'-0" or more.

STATE OF CALIFORNIA
 DEPARTMENT OF TRANSPORTATION
CHAIN LINK RAILING
 NO SCALE

B11-7

2006 STANDARD PLAN B11-7