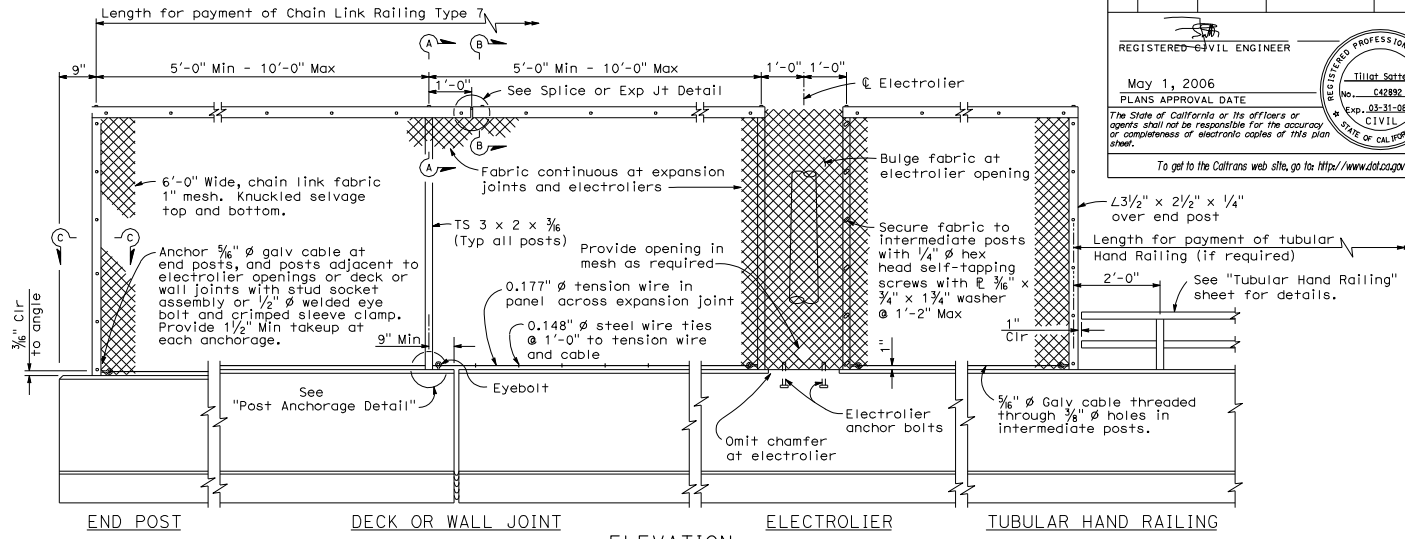


TYPICAL SECTION



ELEVATION

DIST	COUNTY	ROUTE	POST MILES TOTAL PROJECT	SHEET NO.	TOTAL SHEETS

REGISTERED CIVIL ENGINEER

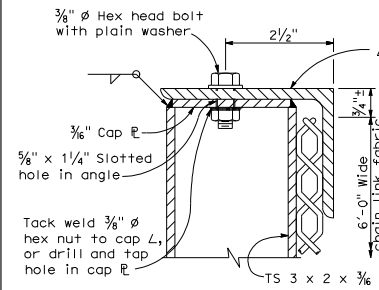
May 1, 2006

PLANS APPROVAL DATE

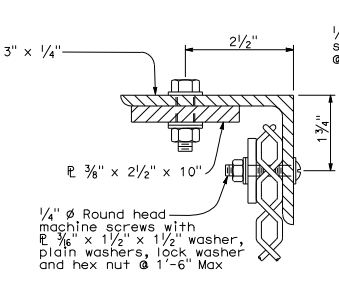
The State of California or its officers or agents shall not be responsible for the accuracy or completeness of electronic copies of this plan sheet.

To get to the Caltrans web site, go to <http://www.dot.ca.gov>

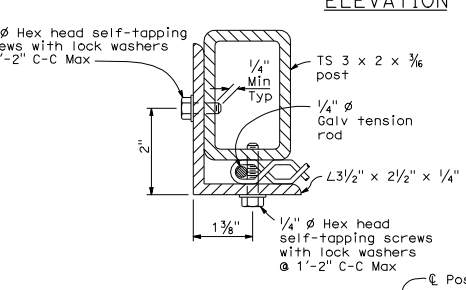
REGISTERED PROFESSIONAL ENGINEER
Tillot Satter
No. C42892
Exp. 03-31-08
CIVIL
STATE OF CALIFORNIA



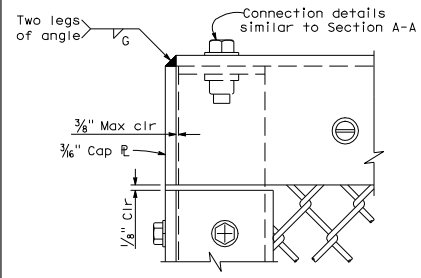
SECTION A-A



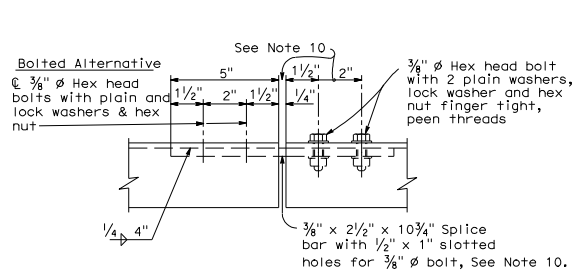
SECTION B-B



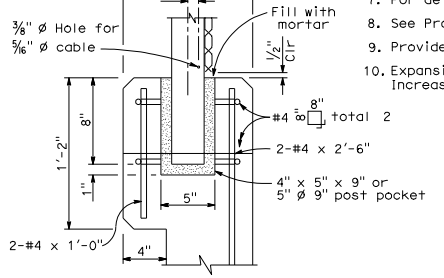
SECTION C-C



END POST ELEVATION



SPLICE OR EXPANSION JOINT DETAIL



POST ANCHORAGE DETAIL

NOTES:

- Railing assembly except chain link fabric to be galvanized after fabrication.
- Posts shall be vertical.
- Railing shall conform to horizontal and vertical alignment. When railing is placed on a curved horizontal alignment with radius of 148'-0" or less, thread the 3/8" ϕ cable through 3/8" ϕ welded eye rods embedded 4" into the top of the concrete parapet and equally spaced to limit the midordinate distance between the 3/8" ϕ cable and the curve to 1" maximum. Horizontal angle shall be bent to conform to horizontal alignment if radius is 148'-0" or less and may be on 10'-0" chords if radius is over 148'-0"
- Horizontal angle shall be continuous over not less than two intermediate posts, except that a shorter length is permitted at expansion joints, electroliers and other rail discontinuities.
- When rail is on slope, place fabric parallel to slope.
- Alternative details may be submitted by Contractor for Engineer's approval.
- For details and reinforcement not shown see Standard Plan B11-54.
- See Project Plans for limits of Chain Link Railing Type 7.
- Provide thimbles at all cable loops.
- Expansion joint same dimension as expansion joint in deck or wall. Increase slotted hole length and splice bar length correspondingly.

STATE OF CALIFORNIA
DEPARTMENT OF TRANSPORTATION
**CHAIN LINK RAILING
TYPE 7**

NO SCALE

B11-52