

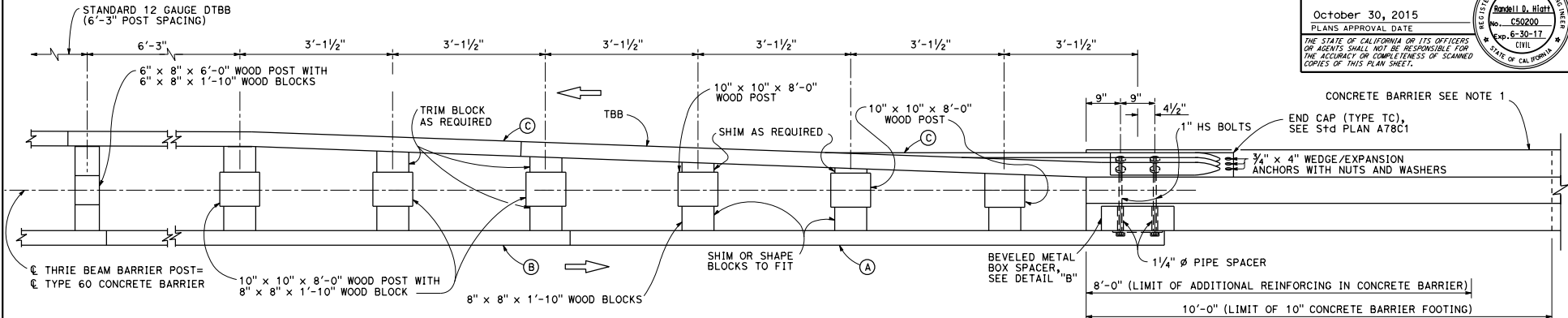
Dist	COUNTY	ROUTE	POST MILES TOTAL PROJECT	SHEET NO.	TOTAL SHEETS

**Randell D. Hiatt**  
REGISTERED CIVIL ENGINEER

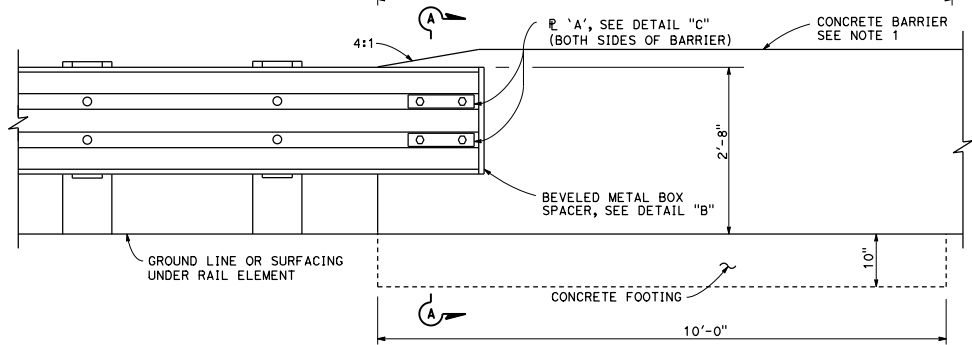
October 30, 2015  
PLANS APPROVAL DATE

**Randell D. Hiatt**  
No. C50200  
Exp. 6-30-17  
CIVIL  
STATE OF CALIFORNIA

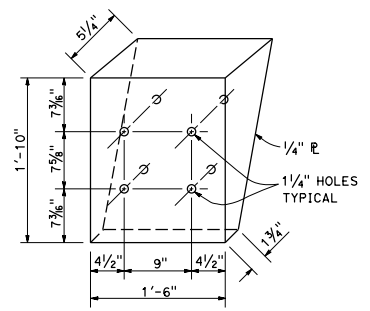
THE STATE OF CALIFORNIA OR ITS OFFICERS OR AGENTS SHALL NOT BE RESPONSIBLE FOR THE ACCURACY OR COMPLETENESS OF SCANNED COPIES OF THIS PLAN SHEET.



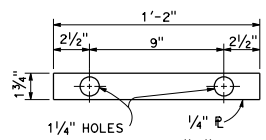
PLAN



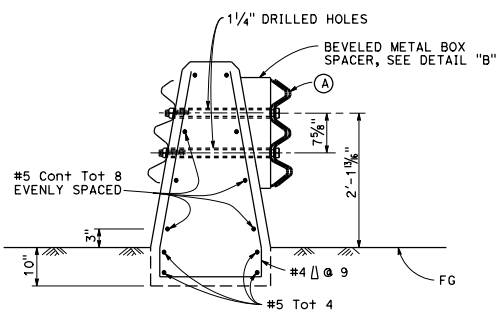
ELEVATION



DETAIL "B"  
Beveled metal box spacer  
See Note 3



DETAIL "C"  
PLATE "A"



SECTION A-A  
(Type 60 Concrete Barrier shown)

NOTES:

1. For details of Concrete Barrier Type 60, see Standard Plan A76A. Thrie beam barrier connections to Concrete Barrier Type 60S and Type 60G are similar to details shown on this plan.
2. For additional thrie beam barrier details, see Standard Plans A78A, A78B, A78C1, and A78C2.
3. Where beveled metal box spacer is installed, place 1/4"  $\phi$  x 3/4" and 1/4"  $\phi$  x 2" pipe spacers on 1" HS bolts passing through interior of box.

LEGEND

- (A) NESTED THRIE BEAM ELEMENTS (ONE 12 GAUGE ELEMENT NESTED OVER ONE 10 GAUGE ELEMENT).
- (B) ONE 10 GAUGE THRIE BEAM ELEMENT.
- (C) ONE 12 GAUGE THRIE BEAM ELEMENT.  
10 GAUGE = 0.135" THICK  
12 GAUGE = 0.108" THICK

STATE OF CALIFORNIA  
DEPARTMENT OF TRANSPORTATION

**DOUBLE THRIE BEAM BARRIER  
CONNECTION TO CONCRETE  
BARRIER**

NO SCALE

**A78I**

2015 STANDARD PLAN A78I

111