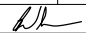
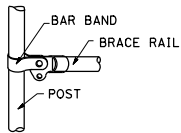
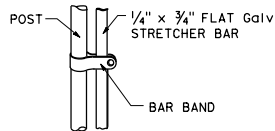


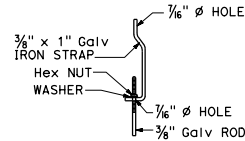
DIST	COUNTY	ROUTE	POST MILES TOTAL PROJECT	SHEET TOTAL SHEETS
 REGISTERED CIVIL ENGINEER No. C61257 Exp. 6-30-17 CIVIL STATE OF CALIFORNIA				
October 30, 2015 PLANS APPROVAL DATE <small>THE STATE OF CALIFORNIA OR ITS OFFICERS OR AGENTS SHALL NOT BE RESPONSIBLE FOR THE ACCURACY OR COMPLETENESS OF SCANNED COPIES OF THIS PLAN SHEET.</small>				



BRACE RAIL



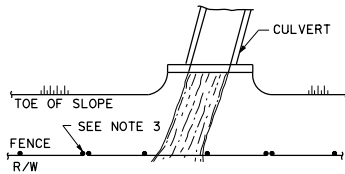
STRETCHER BAR



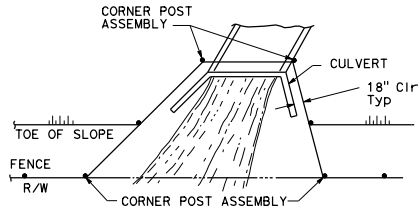
TRUSS TIGHTENER

NOTES:

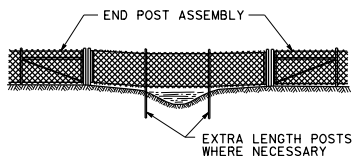
1. All material for abutment connection to be galvanized.
2. The chain link fabric shall be replaced by barbed wire strands at 12" maximum centers between the double posts.
3. When the width of the culvert makes it necessary to anchor a post to the top of the culvert, a cast iron shoe or other device approved by the Engineer shall be used.
4. Fencing over stream and around headwall may also use Barbed Wire or Wire Mesh fencing with either wood post or steel post installation.
5. See Standard Plan A85 for Chain Link fence dimensions. See Standard Plan A86 for Barbed Wire and Wire Mesh fence dimensions and for wood post and steel post installation.



PLAN

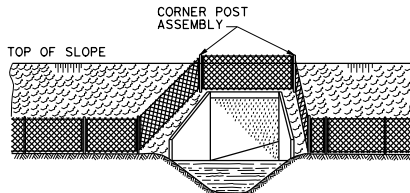


PLAN



ELEVATION

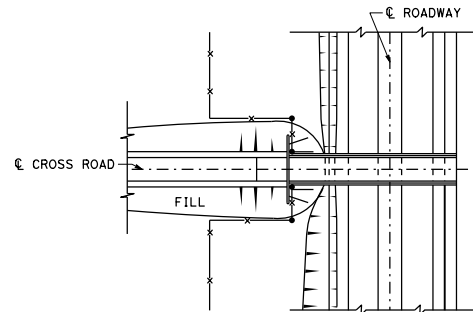
INSTALLATION OVER STREAM



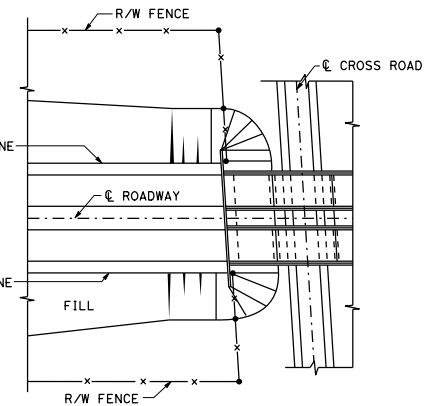
ELEVATION

INSTALLATION AROUND HEADWALL

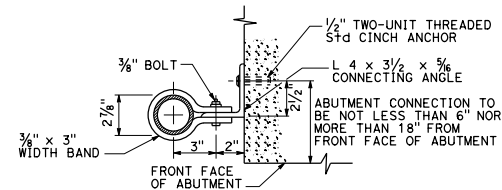
See Note 4



PLAN OF ROADWAY - OVERCROSSING



PLAN OF ROADWAY - UNDERCROSSING



ABUTMENT CONNECTION

TYPICAL INSTALLATION AT BRIDGES

STATE OF CALIFORNIA
 DEPARTMENT OF TRANSPORTATION
CHAIN LINK FENCE DETAILS
 NO SCALE

A85B